

★ info

Newsletter for Sage Master Builder

17316 Kenyon Avenue
Suite 103
Lakeville, MN 55044
(952) 435-9700
(952) 435-9708 fax
(888) 660-9708 Toll Free
info@techwaremn.com
www.techwaremn.com

Techware News

September Pricing Special!

Back by popular demand—Purchase 1/2/3 uses, get 10%/15%/20% off, respectively. (Does not apply to off-schedule products.)

Check out our new web site!

www.techwaremn.com

Chameleon for Sage Master

Builder is designed for small to medium-size construction companies. It captures, routes, stores, and retrieves within easy access, all documents in a construction office. Applications are available for Accounts Payable invoice routing and approval, Job Files Management, Human Resources, and more. Call us for more information or to see a demo!



SAGE TIMBERLINE OFFICE
SAGE MASTER BUILDER

Introducing Sage Master Builder Version 14

Sage Master Builder Version 14 is available now, and includes several enhancements designed to increase your company's efficiency and productivity.

Attach Files

Now you can attach files to records within your Sage Master Builder solution. Just drag and drop the file (Word, Excel, PDF, Web links, or Outlook messages) directly to a record. Store a vendor's invoice, customer correspondence, or a subcontractor's contract with the associated record. You can even make the file *read only* as appropriate. It is an effective way to ensure all relevant communication is within reach of those who need it.

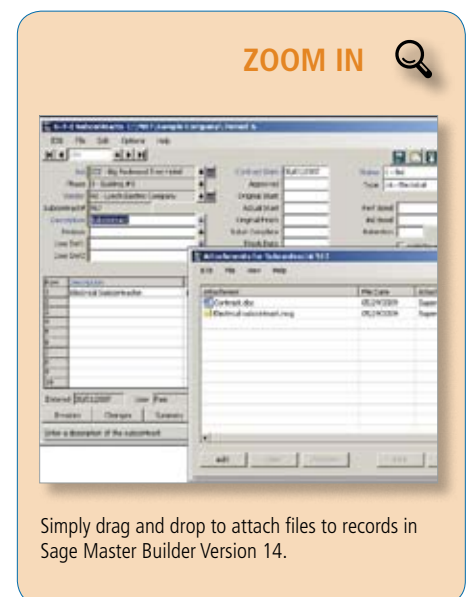
Efficient Subcontracts

To eliminate duplicate data entry, Version 14 centralizes information related to your subcontracts. Now, information about job costs, invoicing, and related change orders will integrate with your accounts payable invoices automatically. Use this new functionality to efficiently track invoice amounts, partial payments, and balances due on subcontracts.

Business Insight

Version 14 includes new ways to gain insight into your company's overall progress and profitability.

- Profit & Loss by Job Report—Provides you with your gross profit breakdown by individual jobs and cost types.
- Executive Dashboard—Gain even more



Simply drag and drop to attach files to records in Sage Master Builder Version 14.

visibility into your business with the ability to view an unlimited number of jobs.

- Income Statement by Period Report—Includes up to 12 side-by-side period comparisons for the current year.

Keep Up With New Technology

The new state-of-the-art architecture of Sage Master Builder Version 14 supports Microsoft Server 2008 and both 64-bit and 32-bit operating systems.

Push Button Exports

Integration with Microsoft Outlook, Word, and Adobe Acrobat allows you to export reports directly out of Sage Master Builder with just a mouse click.

Continued on page 2

Introducing Sage Master Builder Version 14

(continued from cover)

More Features

Sage Master Builder 14 also gives you the following features and capabilities to help you improve productivity and efficiency:

- RFI/RFP numbering by job.
- Improvements to the monthly close books and audit process.
- Notes transfer from Daily Field Reports to Daily Payroll.
- Financial Review and Project Review graph improvements.
- Updated Windows look and feel on the Desktop, buttons, and toolbars.
- Fully functional mouse-wheel scrolling in list windows.

- Change quarter selections on checks and recalculate records. Release a retention-only invoice in Progress Billing. Please call us for information on upgrading to Sage Master Builder Version 14. ✨

Advanced Assembly Databases Streamline Estimating

It has never been more vital to your business success to produce fast and accurate estimates. Sage has recently made a new suite of Advanced Assembly Databases available. These tools can streamline and enhance your company's ability to generate winning estimates. Whether you are a current Sage Master Builder Estimating user, or contemplating adding this solution to your accounting and job costing software, read on for more details.

Several Versions Available

The new Advanced Assembly Databases are available in several versions—Commercial, Residential, Concrete/Masonry, and Site Work. You can choose a version depending on your company's specialty or specialties.

If you bid both commercial and residential projects or self perform work, then the Advanced Assembly Composite Database, a compilation of the four databases, is the answer for you. For companies with less extensive requirements, the Starter Advanced Assembly Database, a smaller version of the Composite database, is an ideal option.

Thousands Of Items

To accommodate virtually all contractors, the Advanced Assembly Databases include 103 assemblies, plus more than 51,000 items categorized by industry standards including: Labor, Material, Subcontract, Equipment, and Other. Also included are more than 7,400 formulas. For Sage Master Builder Extended users, an optional view is available for CSI MasterFormat™ 2004 estimates, enabling these estimates to be sorted by MasterFormat™ 1995, Trade, Construction Schedule or Activities, Schedule of Value, Location, and more.

To illustrate the flexibility of these databases, let's consider the Exterior Wood Framed Wall assembly. It includes three sizes of framed walls (4, 6, and 8 inches), stud length to match wall height, fire blocking, plates, six types of exterior finishes, five kinds of insulation, four kinds of drywall, three kinds of drywall finish, five kinds of base, and over 20 options to meet most any specification.

Even with all of these options, every company may have its own unique requirements, so these databases are easily modified so you can enhance them with your own unique items, formulas, and assemblies.

Build On These Benefits

The databases offer tangible benefits to help your team be more productive immediately. Here are just few:

- Easy implementation. It is intuitive, and requires minimal review and editing, so that you can be up and running quickly.
- Comprehensive assemblies with detailed cost items.
- Contains current manufacturers' pricing.
- Most assemblies support both man-hour and unit pricing.
- Estimates both self-performed and subcontract work.
- Provides multiple methods of labor and material takeoff.
- Produces detailed takeoff quantities and a Bill of Materials for soliciting vendor quotes and ordering materials.
- Helps prepare and streamline processes such as: bid solicitation, buyout, project scheduling, and AIA billing.

It is an ideal time to build upon your estimating capabilities and improve your chances of winning new work. Please give us a call for detailed information on Sage Master Builder and the Advanced Assembly Databases. ✨